

2025 Programme Handbook

NZ3418 New Zealand Certificate in Music (Level 4)

Te Hoe Whakairi Kōrero
Department of Creative Arts and Digital Information



Rāraki Upoko – Contents

Korero Nui - Important Information	1
Learner Information Handbook	1
Attendance.....	1
Non-Engagement	1
Drugs and Alcohol.....	2
Artificial Intelligence (AI) Tools	3
Nau mai ki Ara - Welcome to Ara.....	5
Kā Raki whakahirahira-Important Dates	6
Kā whakapātaka - Contact Details	7
Key Staff	7
Taipitopito akoraka - Programme Details	12
Mahere Ako- Programme Structure.....	13
Kā tika me kā kaweka o te tauira - Learner Responsibilities and Rights	16
Unacceptable Behaviour for Learners, or Visitors at Ara.....	18
Learner Behaviour in class / classroom maintenance	19
Kā Taunakitaka Mōu – Support for You	20
Quick reference – Where to find help if you have feedback or want to raise an issue	20
Kā Aromatawai - Assessments.....	22
Assessment Information	22
Academic Integrity	22
The Grade Scale.....	25
Kā tikaka aromatawai - Assessment Regulations.....	28
Regulations Flowchart	28
Which form do I use?	28
Extensions.....	30
Resits or resubmission of assessment tasks.....	30
Second Results (course level).....	30
Assessment in Te Reo Māori.....	30
Marks Carried Forward.....	31
Supported Assessment.....	31
Recognising Prior Knowledge and Skills	31

Alternative Arrangements	31
Aegrotat.....	32
Reconsideration of Assessment Decisions.....	32
Reconsideration of a Course Final Grade	32
Appeal of Reconsideration Decision	32
Conceded Pass	32
Kā putaka me te Whakapōtaetaka - Results & Graduation	34
Accessing Your Results	34
Academic Transcripts.....	34
Access to marked assessments	34
Receiving Your Qualification	35
Kā ture me kā tikaka - Policies & Procedures.....	36
Academic Policies	36
Academic Support and Progression.....	36
Formal Academic Contract.....	36
Academic Misconduct.....	37
Plagiarism	37
Use of Artificial Intelligence (AI) Tools	37
Cheating	37
Dishonest Academic Practice.....	38
Educative Processes.....	38
Penalties.....	38
Learner Behaviour Management	38
Probation	39
Exclusion	39
Suspension	39
Cancellation of Enrolment.....	40
Refusal of Future Enrolment.....	40
Copyright and Ara Learners	40
Kā rauemi - Resources	43
Kā tū whare - Facilities	43
Health and Safety	43
After-hours access to JZ Block.....	43

Korero Nui - Important Information

Ara is a Business Division of Te Pūkenga - New Zealand Institute of Skills and Technology.

Learner Information Handbook

We recommend that you read your Programme handbook in conjunction with the [Learner Information Handbook](#) on MyAra.

Attendance

Experience has shown that if you attend regularly and participate in the class activities and assessments you are more likely to succeed. Full attendance and commitment are encouraged. You are expected to be punctual and must comply with the various behaviour and safety requirements of classrooms, workshops and labs.

For an International learner satisfactory progress is defined as 100% attendance and successful completion of 75% or more of your courses.

**Let Ara know when you are absent from classes or if you are sick.
Contact your tutor or advise the Department by emailing @ara.ac.nz**

Non-Engagement

Ara has processes to deal with learners who formally enrol here but do not “engage” with their studies. That is, if you do not attend and/or participate and/or submit assignments and/or sit assessments or only attend briefly or spasmodically and/or do not engage significantly.

Our Department process follows these steps if you are a no-show at the start of teaching:

- 1** We will attempt to contact you 3 times and if we are not successful we will withdraw you (1) within 3 days if there is a waitlist of other learners who want to enrol, or (2) within 10% of the length of your enrolment (often 1 – 2 weeks)

- 2** You will receive an email, text or phone call asking why you have not been attending

- 3** There will be no academic or financial penalty from Ara but you could be overpaid by Studylink

Our Department process follows these steps for disengaged learners:

- 1** The registers are checked and if your engagement and attendance is a concern, we will talk with you

- 2** You will receive an email or phone call asking why you have not been attending. You may receive a non-engagement letter

- 3** We will attempt to contact you 3 times

- 4** You may be placed on a Formal Academic Contract or withdrawn

- 5** You will receive a WD grade (after 10% of the duration of the course) or a DNC grade (after 80% of the duration of the course)

If you are struggling with attendance, we fully encourage you to talk this over as soon as possible with your tutor.

Drugs and Alcohol

In line with the expectations of many workplaces, Ara has procedures to ensure the health and safety of all learners, staff and visitors, while undertaking Ara activities.

Ara has **zero tolerance** for the misuse or abuse of alcohol and/or illegal/controlled drugs, possession and/or use of illegal/controlled drugs/substances, or intoxication on all campuses/learning sites.

Many learning activities involve high-risk situations where clear thinking, decision-making, and machinery operation need to be conducted safely. These activities cannot be compromised.

You can download the policy from [CPP506 Drugs & Alcohol Policy](#)

Artificial Intelligence (AI) Tools

When submitting work for assessment, you must adhere to Ara's Assessment and Academic Misconduct policies and not present AI such as ChatGPT as your own work. Learning Services have resources to help you learn to paraphrase or reference another person's work to avoid academic misconduct.

For more detail please read the **Kā ture me kā tikaka - Policies & Procedures** section of this handbook [Policies](#).

We recommend that you read your Programme handbook in conjunction with the Learner Information Handbook (also available on MyAra) which has more detailed information about support and services available to learners at Ara.

Kia rite ki te ako Getting ready for study



Nau mai ki Ara - Welcome to Ara

Welcome to NZ Certificate in Music at Ara in 2025.

The New Zealand Certificate in Music is part of the Performing Arts programme at Ara, which in turn is a part of the Department of Creative Arts and Digital Information. Your study here makes you an integral part of Ara's Creative Arts family and places you alongside artists, designers, broadcasters, writers and performers of all types in the largest Creative Arts department in the country.

An extra welcome to those of you who are new to studying at Ara. The opportunity to pursue increased musical skill and understanding is one that should be grasped with both hands, and I am proud to lead a team of dedicated, professional tutors with decades of experience in the Music Industry. These tutors will guide you through the next few years, their advice is invaluable, and I recommend you seek out their knowledge whenever possible.

This handbook contains important information about your programme of study along with the many responsibilities and requirements that go along with the commitment you have made to study at Ara this year. Please read it carefully; it's your responsibility to understand the guidelines and regulations it contains.

The Music staff will be happy to explain any of the information contained in the handbook. If you don't understand anything; please ask. If you need any more information about Ara's policies and procedures, please visit the learner website [MyAra](#).

In the meantime, I wish you the very best for your studies in 2025. Work hard, perform hard and become the very best that you can be.

Mark McEntyre
Manager, Performing Arts
Department of Creative Arts and Digital Information
February 2025

Kā Raki whakahirahira-Important Dates

SEMESTER ONE

DATES

TERM 1

24 February – 11 April

Waitangi Day

Thursday 6 February

Whakatau

Wednesday 26 February

Good Friday

Friday 18 April

Easter Monday

Monday 21 April

Easter Tuesday

Tuesday 22 April

Anzac Day

Friday 25 April

TERM 2

28 April – 27 June

King's Birthday

Monday 2 June

Matariki

Friday 20 June

MID YEAR BREAK

30 June – 18 July

SEMESTER TWO

DATES

TERM 3

21 July – 19 September

TERM 4

6 October – 21 November

South Canterbury Anniversary

Monday 22 September

Labour Day

Monday 27 October

Canterbury Anniversary

Friday 14 November

Kā whakapātaka - Contact Details

Key Staff

Peter Nock

Head of Department

940 8617

Room: C131

Peter.Nock@ara.ac.nz



Mark McEntyre

Manager

940 8671

Room: C131

Mark.McEntyre@ara.ac.nz



Gwyn Reynolds

Programme Leader

940 8371

Room: JZ125

Gwyn.Reynolds@ara.ac.nz

Teaching Areas:

- Saxophone
- Contemporary Music Industry



Sharon Moynihan

Operations Administrator

940 8063

Room: JZ123

Sharon.Moynihan@ara.ac.nz



Teaching Staff

Harry Harrison

Tutor

940 8614

Room: JZ222

Harry.Harrison@ara.ac.nz

Teaching Areas:

- Guitar
- Music Fundamentals
- Music Performance
- Music Writing & Technology
-



Scott Taitoko

Tutor

940 8710

Room: JZ115

Scott.Taitoko@ara.ac.nz

Teaching Areas:

- Trombone
- Music Fundamentals
- Contemporary Music Industry



Cameron Pearce

Tutor

940 8432

Room: JZ115

cCmeron.Pearce@ara.ac.nz

Teaching Areas:

- Trumpet
- Music Performance



Darren Pickering

Tutor

940 8410

Room: JZ116

Darren.Pickering@ara.ac.nz

Teaching Areas:

- Piano
- Music Fundamentals
- Music Performance
-



David Cooper

Tutor/Technician

940 8227

Room: JZ119

David.Cooper@ara.ac.nz

Teaching Areas:

- Music Writing & Technology



Part Time Teaching Staff

Names:

Luke Smillie

Mike Story

Antony Pickard

Chris Wethey

Elly Rydge

Department Links

**External Facebook page**

<https://www.facebook.com/AraMusicArts/>

Internal Facebook page

<https://www.facebook.com/groups/BMusArts>

Ara Music Arts website

[Bachelor of Music - Ara](#)

YouTube

https://youtube.com/channel/UCbcdSE1kC_0YzWQ1oleOHDQ

Tō Akoako Your study



This section is heavy on detail and sometimes quite formal. There will be things you want to know and other things you will only refer to when something comes up.

Here are some quick highlights of what is in the following pages:

- **The detail and the rules about the qualification you have enrolled in**
- **Ara's expectations about how you will behave and what your rights are**
- **How Ara checks that you are a genuine student (like your attendance)**
- **A quick access guide to getting support**
- **How assessments work and the grades that are used**
- **The assessment regulations that could support you to pā and what forms to use (extensions, resits and more)**
- **Getting your results and going to graduation**
- **Key academic policies**

And lastly,

Health and safety information related to your study, and any after hours access arrangements.

Taipitopito akoraka - Programme Details

Programme Aim

The aim of this programme is to provide the music industry with performers who have the technical ability to perform with confidence and who can contribute to the cultural, social and economic life of Aotearoa New Zealand.

The programme is aimed at individuals who wish to develop their experience and practice in Music. They may include school leavers, and/or those wishing to pathway into the Bachelor of Music.

Graduate Profile

Graduates of this qualification will be able to:

- Read and write music to an elementary level
- Contribute to music composition and arrangements
- Perform music with confidence and ability for an audience
- Demonstrate technical ability on a musical instrument(s)
- Use music creation and sound reinforcement technology
- Apply a broad range of research skills to inform own music practice
- Use a range of personal and interpersonal skills to work in the music industry
- Apply understanding of the music industry to develop own career plan

Programme Regulations

The programme regulations are as follows:

The New Zealand Certificate in Music (Level 4) is a one-year full time equivalent programme of study requiring the successful completion of 120 course credits

Minimum completion time: None specified (allowing for Recognition of Prior Learning, Cross Credit and Credit Transfer)

Maximum completion time: 3 years. Any extension to this period would require a written application to the Head of Department or delegate to the Creative Arts Department Group.

Mahere Ako- Programme Structure

Programme Matrix

Use the following table as a guide to the courses in your programme. You can find out how many credits each course is worth, and how many credits and courses you need to do to complete your study.

NZ3418 Certificate in Music Level 4

Course Code	Title/ description	Pre-reqs	Credit	Level	Work Exp Hours	Total learning Hours	EFTS
CMUS401	Music Fundamentals 1		15	4	0	150	0.1250
CMUS402	Music Fundamentals 2	CMUS401	15	4	0	150	0.1250
CMUS411	Music Performance 1		15	4	32	150	0.1250
CMUS412	Music Performance 2	CMUS411	15	4	32	150	0.1250
CMUS421	Music Writing & Technology 1		15	4	0	150	0.1250
CMUS422	Music Writing & Technology 2	CMUS421	15	4	0	150	0.1250
CMUS431	Contemporary Music Industry 1		15	4	0	150	0.1250
CMUS432	Contemporary Music Industry 2		15	4	0	150	0.1250
Totals			120		64	1200	1.0000

Full time delivery example

Semester 1	CMUS401 Music Fundamentals 1	CMUS411 Musical Performance 1	CMUS421 Music Writing and Technology 1	CMUS431 Contemporary Music Industry 1
	<i>Prerequisite for</i>	<i>Prerequisite for</i>	<i>Prerequisite for</i>	
Semester 2	CMUS402 Music Fundamentals 2	CMUS412 Musical Performance 2	CMUS422 Music Writing and Technology 2	CMUS432 Contemporary Music Industry 2

Part time delivery example

Year 1 Semester 1	CMUS401 Music Fundamentals 1	CMUS411 Musical Performance 1
	<i>Prerequisite for</i>	<i>Prerequisite for</i>
Year 1 Semester 2	CMUS402 Music Fundamentals 2	CMUS412 Musical Performance 2
Year 2 Semester 1	CMUS421 Music Writing and Technology 1	CMUS431 Contemporary Music Industry 1
	<i>Prerequisite for</i>	
Year 2 Semester 2	CMUS422 Music Writing and Technology 2	CMUS4312 Contemporary Music Industry 2

Our Access to Your Work

We may contact you to discuss the right to copy, reproduce, and use your learner work for promotional and education purposes for Ara.

Shows, Competitions and Exhibitions

Gigs	These are ongoing throughout the year
------	---------------------------------------

For all other events please check the BMusArts Facebook site at <https://www.facebook.com/groups/BMusArts/>

Kā tika me kā kaweka o te tauira - Learner Responsibilities and Rights

Learner Responsibilities and Rights

The Ara community consists of a diverse range of people and cultures, and we respect all members of our community. Our aim is to have a community where learners respect themselves and others, a community where healthy social interactions and academic pursuits are expected. To create and maintain the best possible teaching and learning environment, you are protected by basic rights and are expected to respect the rights and responsibilities of others.

Useful Contacts:

Independent Student Advocate: Duncan Dunbar.

Email: duncan.dunbar@ara.ac.nz | Mobile: 027 273 6246

Student Life Team Leader: Meg Nelis

Email: studentvoice@ara.ac.nz

Your Responsibilities as a Learner

As a learner here, Ara expects you to:

Behave safely

- Take care when using equipment and facilities.
- Wear suitable clothing.
- Follow health and safety guidelines and instructions.
- Not endanger yourself or others.
- Follow relevant professional guidelines.
- Ensure you are not intoxicated or under the influence of drugs on Ara premises or when involved in Ara related activities both formal and informal, with your programme, field trips, internships etc.

Respect others

- Be sensitive to personal, social, and cultural differences.
- Respect the needs, rights, and freedoms of others.
- Help to uphold the integrity of Ara qualifications by discouraging/reporting dishonest practices.

Observe Ara rules

- Behave appropriately for a tertiary education environment.
- Genuinely attempt to meet all course requirements including financial obligations.
- Comply with visa requirements.
- Be honest when completing assignments/other assessments.
- Comply with requirements of programme handbooks.
- Follow Ara policies and regulations (refer: <https://www.ara.ac.nz/about-us/policies>).

Your Rights as a Learner

Ara will protect your right to fairness. You have a right to:

Fairness

- Open and accurate information.
- Fair evaluation and assessment.
- Have any problems handled as quickly as is practical and consistent with 'natural justice'.
- Personal privacy.
- Support, representation, and advocacy.

Ara Respects your right to:

- Academic freedom, defined as 'freedom, within the law, to question and test received wisdom, to put forward new ideas and to state controversial or unpopular opinions.' (Education and Training Act 2020)
- Freedom from any form of harassment, bullying, or unjust discrimination.
- Respect for personal, social, and cultural differences.
- Representation in the development, implementation, and review of policies.

Ara will protect your right to Standards:

- Study programmes that meet internal and external standards for approval and registration.
- To have competent and effective teachers.
- Appropriate support services delivered in a professional manner.
- Facilities and resources that meet or exceed Health & Safety legislation.

Concerns / Complaints:

Your rights will be upheld by Ara management. If you think they have been infringed, in the first instance please contact your course tutor. If it is not appropriate to contact your tutor regarding your complaint, or the matter has

not been resolved, please contact your Head of Department/Programme Manager or Student Advocate and/or the Student Life Team

Unacceptable Behaviour for Learners, or Visitors at Ara

The following are examples of behaviour which are not acceptable for anyone (learners, or visitors), at Ara or involved in Ara related activities:

- Breaking any NZ law (e.g., assault, theft).
- Any form of cheating (including plagiarism and other dishonest practices).
- Misuse of technology, software, hardware, or communication systems provided by Ara (refer Ara Code of Conduct for ICT Users in particular).
- Any form of harassment, bullying, or unjust discrimination including social media.
- Unacceptable sexual behaviour (e.g., sexual harassment, accessing pornography/other restricted material).
- Misuse of alcohol, drugs or other substances affecting behaviour, health, or safety.
- Smoking (including vaping) on Ara campuses. (Ara is a smoke free campus).
- Violence or threats of violence.
- Vandalism or other abuse of facilities and buildings.
- Disruptive behaviour in class (e.g., arriving late, use of any electronic device, interfering with the learning of other individuals).
- Inductions (informal) are not permitted at Ōtautahi House or on other Ara premises and are strongly and expressly discouraged by Ara.
- The above is not an exhaustive list of unacceptable behaviours. Where appropriate, Ara reserves the right to contact or report to external authorities.

Academic staff have the responsibility to maintain a safe and effective learning environment.

They may ask you to leave the class if your behaviour indicates limited ability to be safe, disturbance to others learning, or puts others at risk.

Ara takes this code of conduct seriously. Your marks, reports, and references may include an assessment of your behaviour, as well as your educational achievement. Serious infringement may lead to probation, suspension, or cancellation of a current enrolment and/or refusal of a future enrolment (see relevant policies). This may be referred to an appropriate external authority e.g., NZ Police

Learner Behaviour in class / classroom maintenance

Be respectful of other learners and the classroom environment, following classroom specific rules and requirements. To avoid any distractions, you must ensure any electronic device you have on you/with you is diverted, not set to ring, or switched off. Both staff and students have a responsibility to ensure this happens

Dress Code

There is no written dress code, but you are expected to attend classes dressed in a way which is generally acceptable. However, you're expected to be "dressed for the occasion" when going on a site visit or undertaking a Cooperative Education Project. You may be prevented from going on site visits if the staff member is of the opinion that you're not dressed for the occasion. In specific courses, a "dress code" and standard is required. These will be detailed in the Programme Handbook and Course Outline.

Kā Taunakitaka Mōu – Support for You

Quick reference – Where to find help if you have feedback or want to raise an issue

The Education (Pastoral Care of Tertiary and International Learners) Code of Practice sets out the expectations that tertiary education organisations need to consider how their overall systems and resources support learners' wellbeing and safety.

For more detailed information on the code, and support areas listed below, please refer to the [Learner Information Handbook](#) on MyAra.

Support Area	Details	People	Links
Department Staff	This team are your first port of call for issues impacting your ability to study	Tutor Programme Leader Programme Manager Head of Department	
Student Reps	Student reps are invited to attend student rep meetings within your department where they can raise issues on your behalf	Student Voice Posters of your student reps are displayed in your department	Student Voice
Student Services	Ara offers a wide range of student services	Student Advisors Health Centre Student Voice	Student Support
Te Pae Ora	A wellbeing hub for ākonga		Te Pae Ora Te Pūkenga
Independent Student Advocate	Student Advocacy is available to assist you if you are facing difficulties within or beyond Ara that could affect your study	Duncan Dunbar 027 273 6246 Duncan.Dunbar@ara.ac.nz X106 (Rakaia Centre)	Student Advocacy

Complaints Process	Ara has a process to support you and respond if you have a concern or complaint about a course, tutor, or another aspect of your programme	Complaints Co-ordinator	CPP117-Raising-problems-or-complaints CPP117a-Raising-problems-or-complaints-form
Safeplace	Safeplace is the tool we use to report risks, accidents and other incidents	Safety & Wellbeing Co-ordinator Safety & Wellbeing Business Partner	SafePlace FAQ for Learners
Important Policies	All Ara Corporate and Academic Policies can be found at Ara Policy Library		Student Rights and Responsibilities Addressing Bullying, Harassment and Discrimination

Kā Aromatawai - Assessments

Assessment Information

At the start of each course, you will be given a **Course Outline**. Before each assessment you will be given an **assessment brief**. They will show:

The number, type, and due dates for all assessments, including tests and assignments, and will give you details on:

- The weighting of each assessment in your course that contributes to your final grade, if applicable.
- The assessment policy for resits, second results and alternative assessments, if they are different from the policies in this document.
- The time frame for getting your marked assessments back from tutors, if they are different from those stated in this document.
- The penalties for handing assessments in late, if they are different from those stated in this document. These may be different for each course.

If you do not receive this information, talk to the course tutor or Manager/Programme Leader.

Assessment Types

Formative assessment	Verbal and written feedback that takes place throughout classes and the programme.
-----------------------------	--

Summative assessment	Assessments throughout the year that are based on learning outcomes for the course and determine how well you have achieved each outcome. You are given grades and written feedback. These assessments may include practical tests and projects.
-----------------------------	--

The contents of the course work will be explained by the tutor for each course. If at any point your tutor or Programme Leader is concerned about your progress, they will let you know.

Academic Integrity

Ara requires learners to be honest and act with integrity in their learning and assessments.

You are required to:

- present your own original work for assessment
- acknowledge contributions from other sources by using the referencing format required for the programme (failure to do this correctly may be regarded as plagiarism); this includes direct copying, paraphrasing, summarising, and the rearranging of, another person's words or idea/s
- not cheat in tests or examinations
- ensure you follow all instructions and the correct procedures (e.g., no use of mobile phones or personal electronic devices)
- not enter into any agreements with other learners to collude on assignments
- collaborate only as permitted
- not over- or misrepresent the individual contributions of members of any group assignment
- not knowingly help others to cheat
- not present another person's assessment as your own (this includes purchased assessments)
- not act or behave in a way that prevents others from completing their assessments
- keep written and electronic work secure to prevent others from accessing and copying work.

Any exceptions to the above are clearly stated in the information and requirements for the course.

By enrolling at Ara you agree to your work being reviewed by various means to confirm an assessment is your own work. This includes the use of similarity detection software.

Any breaches of academic integrity follow the process set out in the academic integrity procedures. For more detailed information, please refer to the [Academic Integrity Policy](#)

Submitting Your Work

Your tutors will let you know if they have guidelines for presenting your assessments and how to submit your work. Use a computer to create your assessments.

You may be required to submit your work manually or electronically. All assignments must include a completed cover sheet. These are found in JZ123 with Sharon. The physical drop box is in the foyer area of JZ Block by the Mobil Street entrance/exit door.

If you submit your work electronically, keep a copy until your official results are published at the end of the semester. If you have any questions, contact your tutor.

Note: Ara uses as part of its assessment processes electronic plagiarism detection. You will, from time to time, be required to submit assessments for scanning. Electronic copies of assessments must be retained by you until the official results are published after the end of semester or year.

Quality Assurance

Your assessments and exam scripts may be used for internal and external moderation, monitoring, programme reviews, aegrotats, and the resolution of academic appeals and complaints. This helps Ara meet internal and external academic quality assurance requirements. If your assessments are used this way, before they are used, any information that could reasonably be expected to identify you will be removed.

The Grade Scale

The various assessments within a course will be combined according to the weightings shown in the course descriptor, and a grade for the course as a whole will be assigned from the table shown below. A "C-" grade and above represents a pass for the course.

The following grade scale (G29aa) will be used for all courses on the programmes unless advised otherwise in the course descriptor:

Marked Grades

Grade	Mark range	Pass or fail
A+	90-100	Pass
A	85-89	Pass
A-	80-84	Pass
B+	75-79	Pass
B	70-74	Pass
B-	65-69	Pass
C+	60-64	Pass
C	55-59	Pass
C-	50-54	Pass
D	40-49	Fail
E	0-39	Fail

Other Grades

Other grades that may be awarded, for particular circumstances in achievement-based courses include:

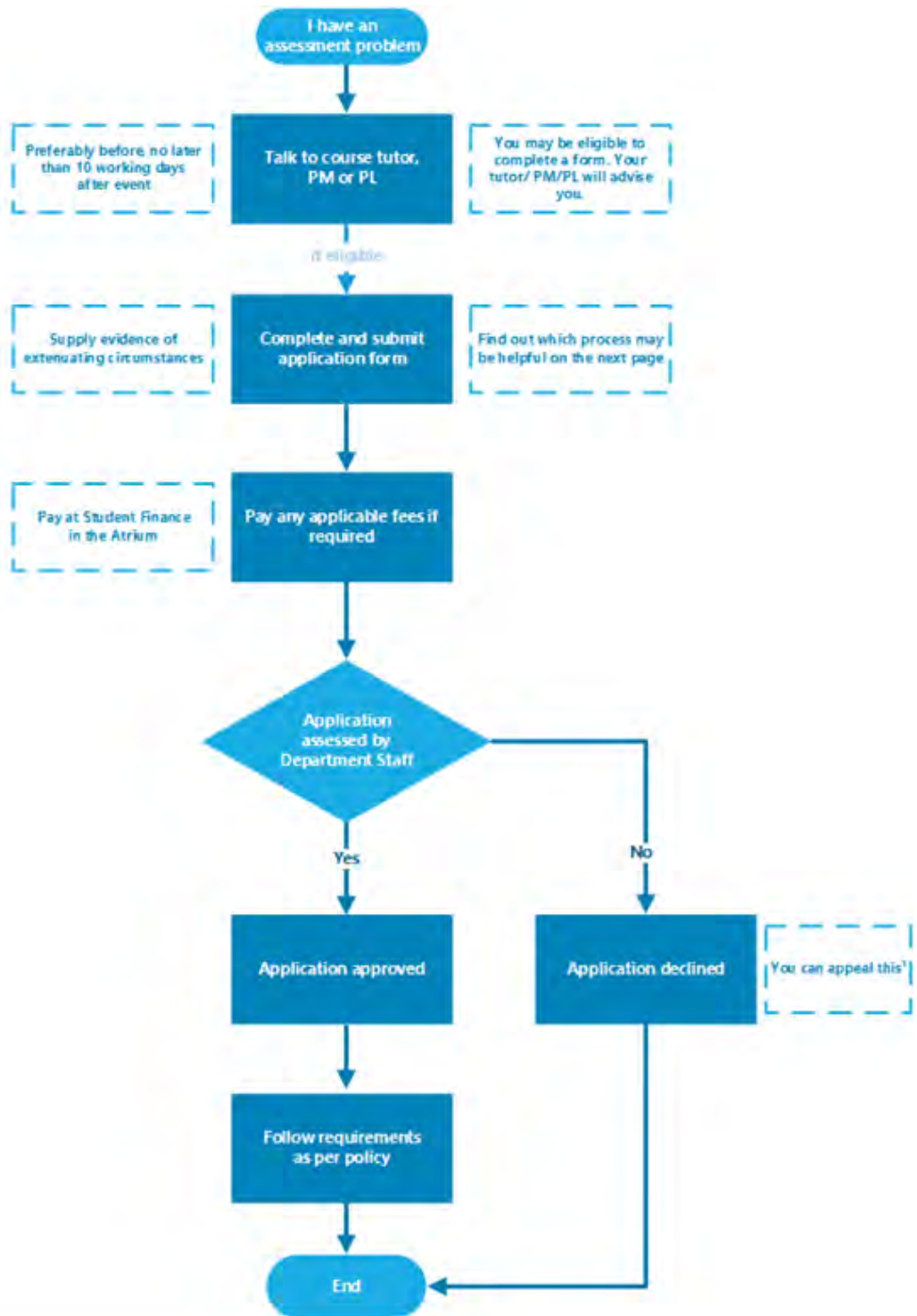
Course result	Grade	Description
Pass	Pass	Awarded pass and no appropriate grade can be awarded
Fail	Fail	Not passed and no appropriate grade can be awarded
Credit Transfer	CT	Course credit awarded by credit transfer
Cross Credit	CC	Course credit awarded by cross credit
Recognition of Prior Learning	P	Course credit awarded by Recognition of Prior Learning
Did not complete	DNC	Did not complete course requirements
Withdrawn	W	Formal withdrawal within the non-academic penalty period
Aegrotat	AEG	Awarded pass following consideration of impaired performance / aegrotat application. Where a grade is able to be determined AEG (Grade) will be recorded.
Restricted pass	RP	Where a course was narrowly failed (45-49%) and is compensated by overall good performance in the relevant subject. It cannot be used to meet pre-requisite requirements
Conceded Pass	CON	Where there is considerable evidence that marginal failure (45-49%) in one course is compensated by good overall performance. Only one conceded pass may be granted to a learner towards a particular qualification

Conditional Pass CP

Where a course was narrowly failed (45-49%) and an agreed portion of work or assessment is to be completed.

Kā tikaka aromatawai - Assessment Regulations

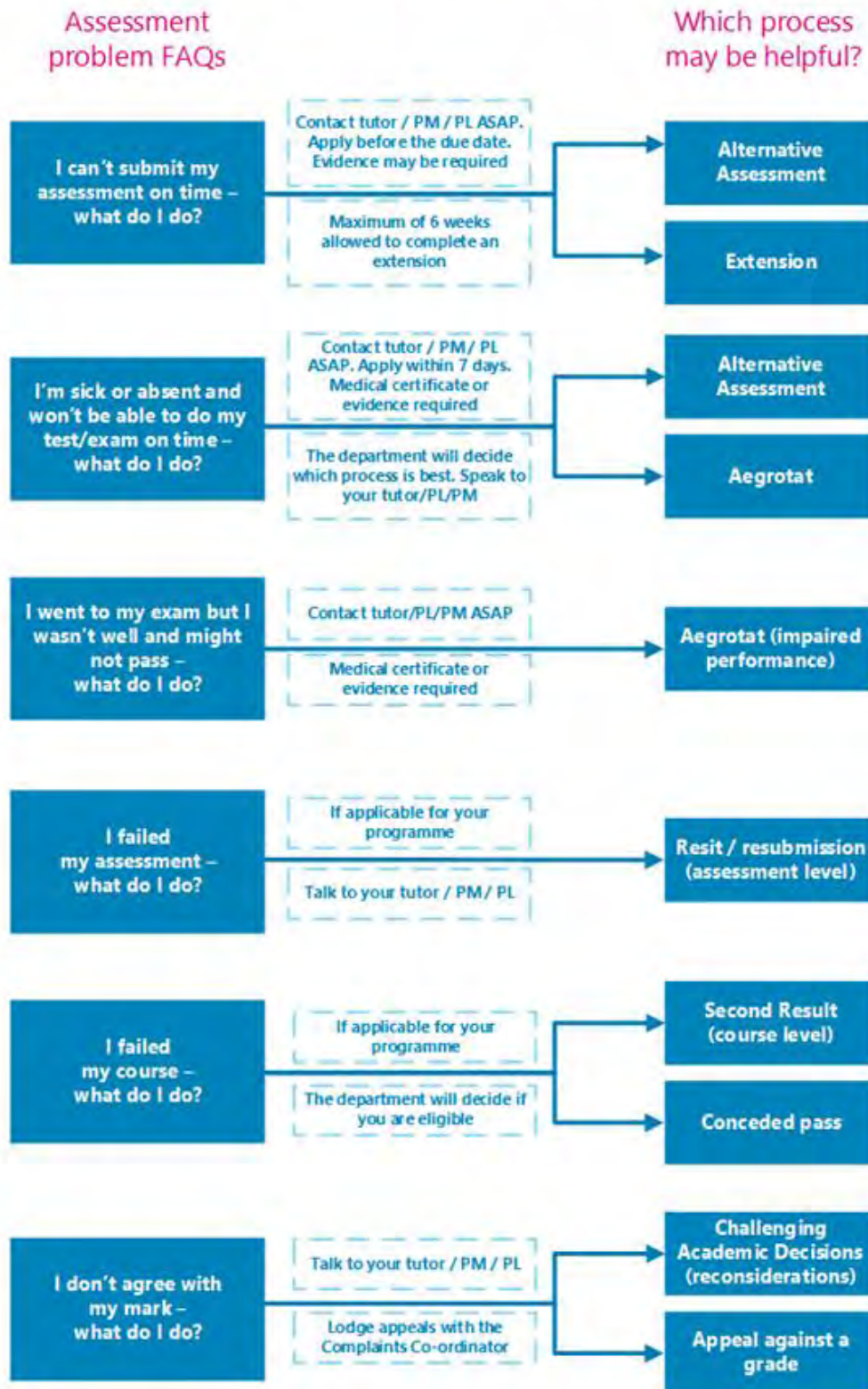
Regulations Flowchart



The student lodges the appeal in writing with the Complaints Co-ordinator with a copy to the Head of Department

Which form do I use?

* Always speak to your tutor, Programme Manager (PM) or Programme Leader (PL) to see if you are eligible



Extensions

If you anticipate difficulty in submitting assessments by the due time and date you may be able to request an extension.

For information about how to apply for an extension of time, see [Assessment Policy](#) - scroll down and find **3.14 Extensions**. You can download the form from [Application for Extension of Time](#)

Resits or resubmission of assessment tasks

If you have submitted and failed an assessment task you may be able to apply for a resubmission resit. In this programme one resit or resubmission per course is allowed on failed results.

For information about how to apply for a resit or resubmission, see [Assessment Policy](#) - scroll down and find **3.15 Resits and Resubmissions**. You can download the form from Application for Resit or Resubmission

Second Results (course level)

If you receive a fail grade in a course you may be able to apply for a reassessment of the course. In this programme this opportunity is only available if the successful completion of one failed assessment (eg final exam) would result in a pass for that course.

For information about how to apply for a second result, see [Assessment Policy](#) - scroll down and find **3.16 Second Results**. You can download the form from [Application for Second Result](#).

Assessment in Te Reo Māori

You can request to have your assessments conducted in Te Reo Māori, except where the task requires English language or other language capability. Other exceptions may apply.

For information about how to apply for assessment in Māori see [Assessment Policy](#) - scroll down and find **3.4 Assessment in Te Reo Māori**

Marks Carried Forward

You may be able to apply to carry marks forward for completed assessments to the next available occurrence of the course and not redo those assessments.

For information about how to apply for marks carried forward, see [Assessment Policy](#) - scroll down and find **3.18 Marks Carried Forward**. You can download the form from [Marks Carried Forward Application form](#).

Supported Assessment

You may be able to apply for special assistance in order to undertake an assessment.

For more information about how to apply for additional assessment arrangements for disabled learners, see [Assessment Policy](#) - scroll down and find **3.19 Procedures for additional assessment arrangements for disabled learners**.

Recognising Prior Knowledge and Skills

If you believe that a qualification, course or unit standard you have previously completed a recognised educational institution, or work/life experience, may be relevant to the qualification you are studying, you could apply for recognition of your prior knowledge and skills.

The previous grade is carried forward for any Cross Credit or Credit Transfer, and the Pass (P) grade given where a standard grade cannot be stated.

For information about how to apply for credit recognition, see [Credit Recognition](#). You can download the form from [Credit Recognition Application](#).

Alternative Arrangements

If you are unable to sit a test or exam on the scheduled date, or complete an assessment on the due date, you may be able to apply for an alternative assessment

For information about how to apply for an alternative assessment see [Assessment Policy](#) - scroll down and find **3.13 Alternative Assessment Arrangements**. You can download the form from [Application for Alternative Time for Test / Exam](#)

Aegrotat

You may be able to apply for an aegrotat when illness, injury, bereavement, childbirth, or other unforeseen critical circumstances occur on or immediately prior to the day of assessment and prevent you from attending the assessment or seriously impair your performance during the assessment itself.

For information about these regulations, see [Aegrotat Pass Regulations](#). You can download the form from [Aegrotat Application](#) and the Practitioner Statement form from [Aegrotat Practitioner Statement](#).

Reconsideration of Assessment Decisions

If you have reason to believe that the mark for a particular assessment is incorrect you may be able to apply for a reconsideration.

For information about challenging academic decisions (reconsideration), see Challenging Academic Decisions (Reconsideration) [Assessment Policy](#) - scroll down and find **3.20 Reconsiderations and Appeals**. You can also refer to [Reconsiderations and Appeals](#).

Reconsideration of a Course Final Grade

If you have reason to believe that the grade for a particular assessment is incorrect you may be able to apply for a reconsideration.

For information about challenging academic decisions (reconsideration), see Challenging Academic Decisions (Reconsideration) [Assessment Policy](#) - scroll down and find **3.20 Reconsiderations and Appeals**. You can also refer to [Reconsiderations and Appeals](#).

Appeal of Reconsideration Decision

If you consider that the outcome of the reconsideration process is incorrect or unfair, or a reconsideration is not available, you may appeal against the final grade awarded.

For information about challenging academic decisions (reconsideration), see [Assessment Policy](#) - scroll down and find **3.20 Reconsiderations and Appeals**. You can also refer to [Reconsiderations and Appeals](#).

Conceded Pass

You may qualify for a conceded pass if you marginally fail a course.

For information about conceded passes, see [Assessment Policy](#) - scroll down and find **3.17 Conceded Pass**.

Kā putaka me te Whakapōtaetaka - Results & Graduation

Accessing Your Results

Results of individual assessments will be made available to you within ten (10) working days of your assessment due date.

These results may be returned to you in class or online. Final grades for each course will be available online within fifteen (15) working days of the end date of the course from the Student Portal at accessible through My Ara at [MyAra](#) or through the My Ara app.

Any results displayed publicly will use unique identifiers such as student ID numbers, not learner names.

Note: Staff members are under no obligation to advise you of your final grade for a course. After you have completed all the assessments in a course, we ask that you allow the staff time to complete the marking. At the end of semester staff members are under great pressure to submit final results to Academic Records so that they can be processed and then made available to all learners as soon as possible.

Academic Transcripts

If you require your results to be printed, visit Central Academic Records (CAR) in A121 or email academic.records@ara.ac.nz to request a transcript.

Access to marked assessments

You are entitled to access to your written work submitted for assessment.

Where assessed work is to be returned, time limits for collection will be advised by the department.

You may view copies of your examinations, but these are retained by Ara. Any time or access limitations will be advised by the department.

Please note that in order to meet internal and external academic quality assurance requirements, learner assessments and examination scripts may be used for the purposes of:

- internal and external moderation
- programme review
- aegrotats (if available)
- resolution of academic appeals and complaints

Assessments used for these purposes will have information, which could reasonably be expected to identify the individual removed before they are copied and used.

Receiving Your Qualification

Once you have successfully completed your approved programme of study you will receive a notification advising you that your certificate is ready and will be posted to you.

Note: Please make sure your address details are up to date when you finish studying. Advise Academic Records if you are updating your address details after you receive the notification, so the correct address is used.

Graduation

We hold several graduation ceremonies. If you're eligible to graduate, you'll receive a communication from Ara advising you of this. You'll need to complete the online graduation form, by the date indicated, to register for your ceremony.

Note: If you believe you are entitled to graduate and do not hear from Ara please contact the Department Administrator or Academic Records.

For all information on graduation, including dates, please see [Graduation](#)

Kā ture me kā tikaka - Policies & Procedures

Academic Policies

All policies are accessible on the Ara website [Ara Policy Library](#). Ara provides a student advocacy service.

It is well known that people learn better when they work together, and this is encouraged, but when it comes to assessment, collaboration (working together) is not permitted unless it is a formal part of the assignment set by the tutor(s). Each learner is also responsible for making sure his/her work is not able to be copied by others. Sharing or comparing tests, exams and assessments is prohibited and, if detected, will be treated as “academic misconduct”.

Academic Support and Progression

Support is available if you, as a learner, are having difficulty meeting academic standards or you seek guidance, assistance or support with study related matters.

If you are not achieving satisfactorily, you will receive specifically targeted advice and assistance at an early stage.

Academic staff members will work with you if you are not meeting academic standards to document and implement a plan. This will include identifying and monitoring goals, expected academic progress, timelines and support.

If satisfactory progress is not made then you will be invited to meet with the Head of Department or his/her delegate, who will explain the circumstances, discuss the consequences, and give you the opportunity to present your view of events leading up to the meeting. Depending on the outcome of the meeting, a Formal Academic Contract may be entered into.

Formal Academic Contract

If your progress as a learner in a current course is still considered by tutors to not be satisfactory you will be invited to a meeting and advised in writing by the Head of Department or delegate.

The Formal Academic Contract will record the deficiencies or concerns, the progress which must be met, any assistance available, the time within which

progress or change must be demonstrated, and the method and criteria by which such progress or change will be measured.

For more information about Academic Support and Progression, see [Academic Support and Progression](#) - scroll down and find 3.3 Formal Academic Contract.

Academic Misconduct

Cheating, plagiarism and other dishonest academic practices have serious consequences in this programme and if you fail to meet academic standards you, as a learner, may be subject to educative processes or penalties.

Plagiarism

Copying, taking or using someone else's work or ideas and presenting them as if they were your own original work or thought, without clear acknowledgement of the actual source.

Use of Artificial Intelligence (AI) Tools

Generative Artificial Intelligence (AI) services such as ChatGPT can be used for learning. When submitting work for assessment, you must adhere to Ara's Assessment and Academic Misconduct policies. In relation to AI, this means;

- you must not present any output from any AI services as your own work in your assessment.
- you must use your own words.
- if you paraphrase or quote from a source such as a textbook, website and AI service, you must reference correctly

If you submit an assessment using content copied directly from an AI service without acknowledgement, it is a form of academic misconduct.

Cheating

Acting deceitfully or dishonestly to gain academic recognition or an academic result. Examples include copying answers from another person's work, taking useful information secretly into a test or exam, improperly accessing information about questions and/or answers, arranging for someone else to produce an assignment or to sit a test or exam.

Dishonest Academic Practice

Any other act or omission that contravenes Ara academic requirements of a programme or course.

Educative Processes

These are actions designed to assist you, as a learner, in understanding the expected standards and skills needed to succeed and may include:

- a facilitated discussion with an appropriate staff member
- a formal contract with Learning Services or other appropriate staff member for skills development including specific learning outcomes and timeframes
- additional work may be required
- a formal written warning may be given, or marks deducted.

Penalties

These are actions designed to deter misconduct and/or deal with the consequences of it in a fair and appropriate way and may include:

- a decision not to mark or assess the work or record a mark/grade
- formally recorded fail / zero for the work concerned which remains on your academic record
- cancellation of credit already awarded if the academic misconduct is admitted/ established after assessments have been completed and recorded
- formal notice indicating 'Intentional Plagiarism' (or other misconduct) placed on academic record for a specified period of time.
- formal written warning
- probation or suspension from the programme or other penalty.

Learner Behaviour Management

If you are identified as a learner who displays unacceptable behaviour the department will monitor your progress and provide support at the earliest stage. This may include referral to Student Support Services to ensure additional support is provided to you.

If you do not respond you may be placed on a behaviour improvement plan This will include identifying, documenting, implementing, and monitoring goals, expected behavioural progress, timelines, and support. If you do not meet the

outcomes outlined in the behaviour management plan, you may be moved to probation.

Probation

If your behaviour, as a learner, is unacceptable and of concern to staff or other learners, you will be advised of this in writing by the Head of Department. This written warning is known as probation.

The written advice must briefly record the deficiencies or concerns, the progress or standards of behaviour which must be met, any assistance available, the time within which progress or change must be demonstrated, and the method and criteria by which such progress or change will be measured.

The progress or change required should be reasonable and the criteria for assessing whether the progress or change has been achieved should be easily understood and capable of being clearly demonstrated.

The written advice must include the warning that failure to make progress or achieve change may lead to suspension and/or cancellation of current enrolment(s) and/or refusal of future enrolment(s).

These requirements are known as the “terms and conditions of probation”.

For more information about probation, see [Probation](#) - scroll down and find 3.4 Probation.

Exclusion

An exclusion may apply to one or more specified courses, a whole programme, or all enrolment at Ara. An exclusion may also apply to one or more specified services or facilities.

Suspension

Suspension is a short-term exclusion and is the formal process by which you, as a learner, are temporarily prohibited from attending classes in one or more courses and/or is refused access to one or more services/facilities provided by Ara. In serious circumstances a Trespass Notice may also be issued.

Cancellation of Enrolment

Ara may cancel your enrolment as a learner on any of the Education Act (1989) grounds:

- The person is not of good character.
- The person has been guilty of misconduct or a breach of discipline.
- The person is enrolled for full-time instruction in another institution or in a school.
- The person has made insufficient progress in the person's study or training after a reasonable trial at the institution or at another institution.

The decision to cancel or refuse an enrolment may be made only by the Operations Lead or nominee.

Failure to meet the terms and conditions of Academic Contract and/or probation may lead to exclusion.

When a cancellation is being considered, the Head of Department must invite you to an interview.

Refusal of Future Enrolment

Any person may, for good reason and on good evidence, be refused enrolment at Ara generally or in a particular programme or course only by the Operations Lead or by his or her nominee under specific delegation.

Enrolment may be refused on any of the Education Act (1989) grounds.

Failure to meet the terms and conditions of probation may lead to exclusion.

The Head of Department must forward a recommendation to the Operations Lead that the person's application(s) to enrol be refused. The recommendation must state which of the Education Act (1989) grounds is the basis of the recommendation and must include the supporting evidence.

For more information about Exclusion, including Appeal Rights and Other Rights, see [Exclusion](#) - scroll down and find 3.4 Refusal of Enrolment.

Copyright and Ara Learners

Copyright legislation exists to protect copyright owners from unauthorised copying of their work (literary, dramatic, musical and artistic), and provides them with exclusive rights to how their work is used.

During your study with us we will endeavour to educate you on copyright use, including referencing, approved copying, and proper use of electronic material and downloadable music.

Infringement of copyright regulations may result in civil or criminal prosecution against you, as the learner, and/or Ara. Infringement by you, as a learner, may also be considered academic misconduct and result in penalties.

For more information about Copyright, see [Copyright](#).

Kā tū whare me kā rauemi

Facilities and resources



Kā rauemi - Resources

Noticeboards

Timetables and other learner information, including employment opportunities, will be posted on the notice boards downstairs in the foyer area, Moodle and on Facebook.

Lockers

There are limited amounts of lockers on **2nd level (JZ208)**. Should you wish to use a locker you must supply your own lock. By placing your lock on an unused locker, it effectively becomes yours for the duration of the programme. It is recommended you use a combination lock to remove the stress of lost or forgotten keys. Please only 'claim' a locker if you are going to use it on a daily basis.

Kā tū whare - Facilities

Health and Safety

Ara Institute of Canterbury is committed to providing a healthy and safe work environment at all of its physical locations and during any Ara activities.

Please refer to the [Learner Information Handbook](#) for general Health and Safety information. In an emergency advise a staff member. If no one is available phone 111.

After-hours access to JZ Block

Accessing facilities after hours is a privilege, not a right. To make sure you are safe, and the facilities are secure, please observe the terms and conditions imposed by Ara.



Ara can withdraw after-hours access if there is a concern about safety or security

What are after hours?	After hours are defined as after 5.00pm until 11.00pm during the days of your course(s) and during weekends, statutory holidays, term breaks and study breaks. Note: Your access will end at 11.00pm so you cannot enter back into JZ Block after 11.00pm.
Am I eligible for after-hours access?	You have after-hours access if you are a current Music Arts learner. You can use the facilities for work directly related to your programme.
Allowing visitors onsite	Visitors and unauthorised private work are not allowed onsite, unless you have specific permission from the Programme Manager.
Using the facilities after hours	<p>Access depends on the following conditions:</p> <ul style="list-style-type: none"> • You must access the building with your ID card. Keep your ID card with you whenever you are on campus, especially after hours. Security guards and custodians may ask you for it. If you cannot show it to them, they are entitled to ask you to leave the building. • Keep your mobile phone with you at all times, for your own safety. You are highly advised to save security's number (027 540 8076) in your phone. <p>If you damage or lose any equipment or facilities, you may be held financially accountable for their repair or replacement</p>

Disclaimer:

All care and attention has been given to ensure the information in this document is accurate at the time of publishing. Ara does not take responsibility for any loss or harm incurred as a result of reliance upon any information which is incorrect or out of date. This document was last updated on 20 January 2025.



Want to find out more?

For details and information about making the most of your study at Ara, visit www.myara.ac.nz or get the **downloadable app**.

Get in touch if you have any questions: **0800 24 24 76** | info@ara.ac.nz